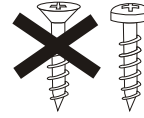


МОНТАЖ  
FITTING  
MONTAGE



# Vertikal Standart/Slope

Bitte nur beiliegende Schrauben verwenden.  
Please use enclosed screws only.  
Se servir exclusivement des vis jointes.  
Просьба использовать только  
приложенные винты.



Wichtig! Bitte aufbewahren.

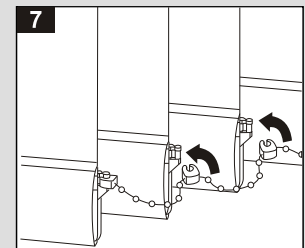
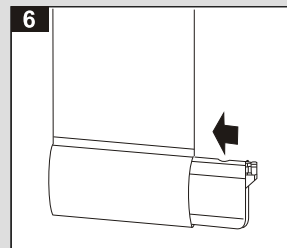
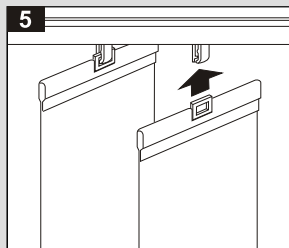
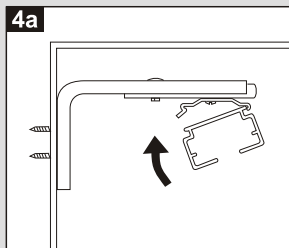
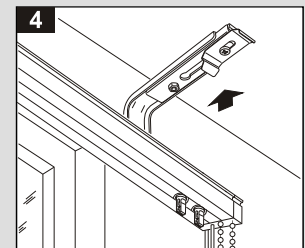
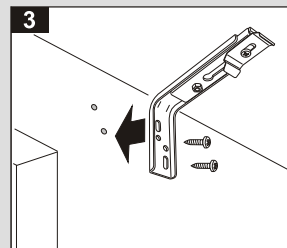
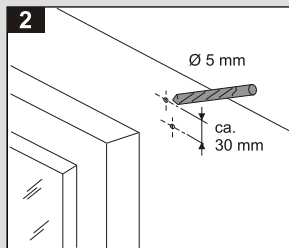
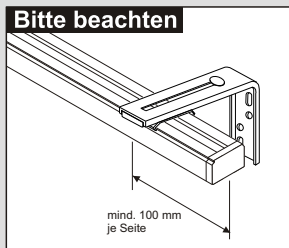
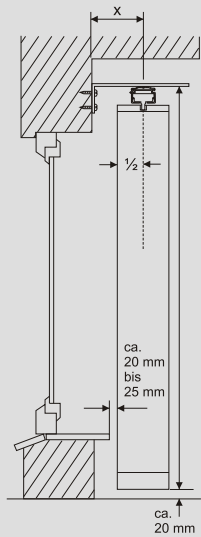
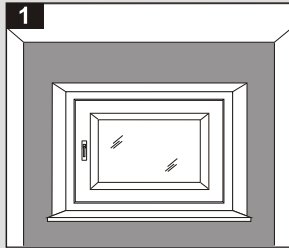
Important! Please keep together.

Important! Veuillez conserver.

Важное указание!  
Просьба хранить!

Montage • Fitting • Montage • Монтаж

## Wand

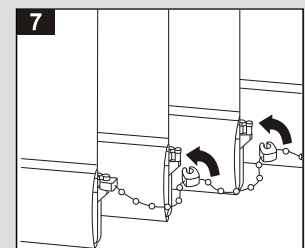
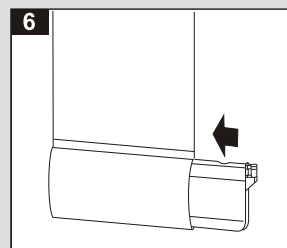
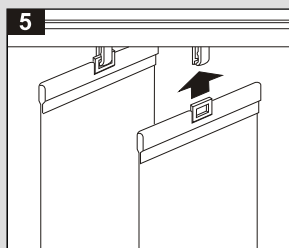
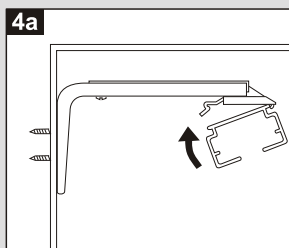
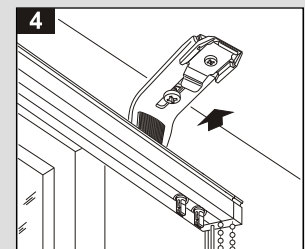
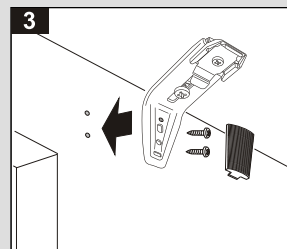
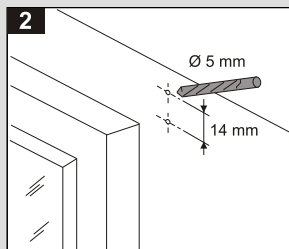
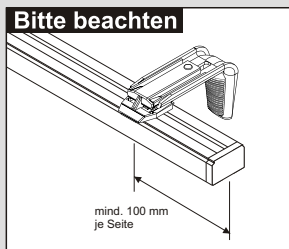


### 127er Lamelle

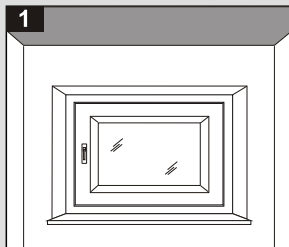
X = Fensterbanküberstand  
+ 20 mm + 63,5 mm

### 89er Lamelle

X = Fensterbanküberstand  
+ 25 mm + 44,5 mm



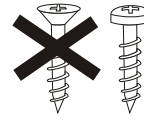
## Decke





# Vertikal Standart/Slope

Bitte nur beiliegende Schrauben verwenden.  
Please use enclosed screws only.  
Se servir exclusivement des vis jointes.  
Просьба использовать только  
приложенные винты.



Wichtig! Bitte aufbewahren.

Important! Please keep together.

Important! Veuillez conserver.

Важное указание!  
Просьба хранить!

**127er Lamelle**  
X = Fensterbanküberstand  
+ 20 mm + 63,5 mm

**89er Lamelle**  
X = Fensterbanküberstand  
+ 25 mm + 44,5 mm

**Bitte beachten**  
mind. 100 mm je Seite

**2**  
Ø 5 mm

**3**

**4**

**4a**

**5**

**6**

**7**

## Demontage • Disassembly • Démontage • Демонтаж

**1**

**2**

**3**

**4**

## Reinigung Fenster

**1**

**2**

**3**

**4**

**5**  
Klick